

A man and a woman are relaxing in a hot tub. The woman is smiling and looking at the man. A waterfall feature is visible in the background, pouring water into the tub. The scene is set outdoors with a stone wall in the background.

Twilight SERIES®

 BY MASTER SPAS®

YOU CAN NEVER HAVE TOO MUCH GOOD.



There is no better time than Twilight. Amid the busyness and stress of daily life, there is a break in the day. It's the time where you can find the space to make time for yourself. Whether you want to soak in the quiet or reconnect with loved ones — embrace the opportunity to focus on total well-being. The beauty of owning a Twilight Series® hot tub is that you rule the best part of your day.

You can never have too much good.

Designed to restore body and spirit, the Twilight Series' exclusive features and indulgent design create an unrivaled spa experience. The innovative water management system makes spa maintenance and care effortless. Enjoy clean, clear, fresh-smelling water with less work — year-round, in any climate.

Discover more about the Twilight Series because you can never have too many good things in life.

Twilight
SERIES®

 BY MASTER SPAS





STRESSRELIEF NECK AND SHOULDER SEAT™
Strategically placed jets and magnets provide the ultimate tension relieving therapy.



MASTER BLASTER® FOOT THERAPY SYSTEM
Treat your feet to soothing, massaging jet action.



HYDROTHERAPY JETS
From the full-body massage, to concentrated neck and shoulder relief, to lounge and cool-down seats, you get the spa experience that's just right for you.

Your whole being will say “Ahh.”

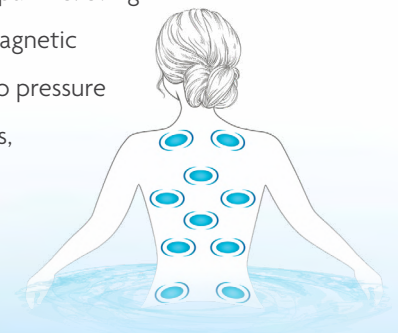
Your perfect spa experience awaits with a Twilight Series hot tub. Indulge in a full-body massage or relieve neck and shoulder tension. Relax into a contoured lounge seat or take a moment in a cool-down seat. With adjustable jets and easy-to-use temperature settings, you can direct the pressure and relieve life's stresses.

Our StressRelief Neck and Shoulder Seat™ features a ledge with specially designed jets that are positioned downward — putting your neck and shoulders under the jets for the ultimate tension-relieving massage. Our exclusive Master Blaster® Foot Therapy System uses dual jet clusters with 28 total individual nozzles designed to rejuvenate your body through an encompassing foot massage. When you feel the stress-relieving power of the hydrotherapy jets in each ergonomically designed seat, you'll wonder how you lived without it.

Magnetic Therapy

Our exclusive Master Force™ Bio-Magnetic Therapy System offers the benefits of magnetic therapy in the comfort of a hot tub. Magnetic therapy has been used for centuries to help relieve pain, improve circulation, reduce swelling and alleviate stiffness. Today, more and more doctors and physical therapists are using magnetic therapy for the treatment of back problems, arthritis and sports injuries.

That's why Master Spas, after extensive research and development, chose to combine the proven benefits of hydrotherapy with the pain-relieving comfort of bio-magnetic therapy. Our Master Force Bio-Magnetic Therapy System applies strategically placed magnets to two pressure points behind the neck and eight throughout the shoulders, back and seat areas in our exclusive StressRelief Neck and Shoulder Seat.





LOUNGE SEATING
Ergonomically designed to fit the contours of your body, our lounge will wrap you in ultimate therapeutic comfort.



SOAK IN THE WARMTH
In a matter of minutes, your tension will disappear.



STRESSRELIEF NECK AND SHOULDER SEAT™

MasterSpas.com



Music, laughter, family and friends

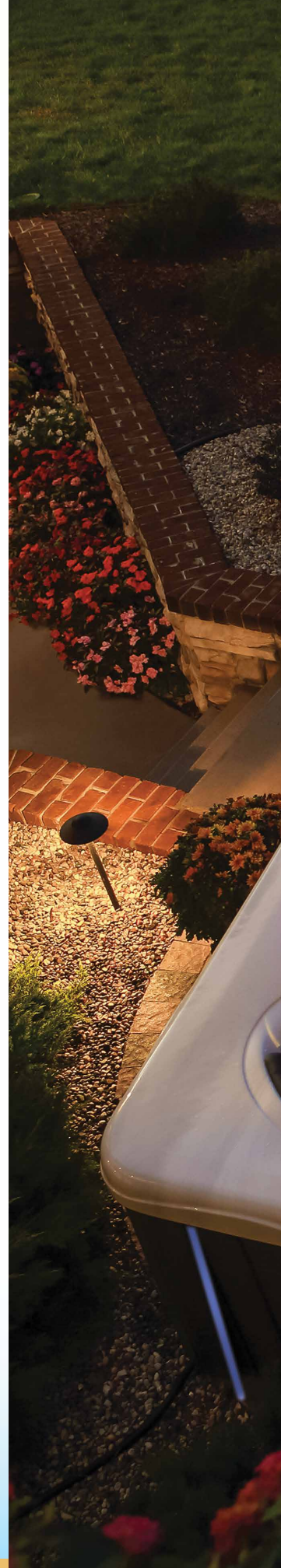
A Twilight Series hot tub is not only remarkable for relaxation and hydrotherapy but it is the perfect setting to bring together family and friends. Since everything about this hot tub is delightfully stress-free, you'll have peace of mind when you're entertaining. Controls offer one-touch digital ease so you can truly relax while the hot tub does all the work. The Orion Light System™ illuminates the cascading waterfall and topside controls. Dream Lighting* adds soft streams of light to accent the exterior corners of your hot tub at night. The Fusion Air Sound System* provides the music and sets the tone of your occasion. With a Twilight Series hot tub, you can live in the moment amid quality and good times.



"One of my favorite things about purchasing this hot tub is that I have been hanging out more with my kids—I have two 13-year olds and a nine-year-old. So a lot of times, when I'm using it at night, we'll have these conversations about life that I don't think we would be having if we didn't have the opportunity to shut off all the screens. So that's been a really cool thing about it."

— Marcy L., Ayer, MA

*Optional





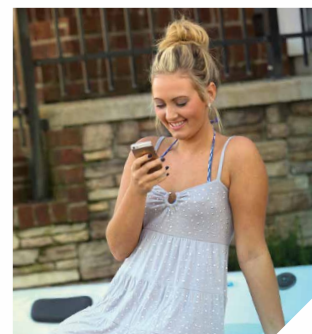
ORION LIGHT SYSTEM™
LED lights beautifully illuminate the water as well as the cascade waterfall and topside controls.



DREAM LIGHTING Beautiful soft streams of light accent the exterior corners of your hot tub at night.



CASCADING WATERFALL
Create a tranquil yet inviting space in the privacy of your backyard. The cascading waterfall feature adds to the overall relaxation of your Twilight Series hot tub.



FUSION AIR SOUND SYSTEM
Two interior water resistant speakers and a subwoofer maximize the sound quality of your music. This optional system comes with a water-resistant remote and connects quickly and easily to your phone or other device via Bluetooth, allowing you to stream your favorite station or playlist.



Clean, pure water



At Master Spas, we want you to spend more time enjoying our products and less time taking care of them. That's why we developed the exclusive and patent-pending EcoPur® Charge Master Core Technology water purification system – a filtration system that makes maintaining your hot tub's water easier. Using the same multi-stage filtration techniques as Mother Nature, EcoPur Charge relies on a unique blend of copper and zinc, which eliminates most microorganisms and removes heavy metals from the water. This results in sparkling water that feels softer and doesn't have the harsh chemical smells associated with common systems.



Mast3rPur™ Water Management System*

The synergistic blend of three proven natural sanitizers provides water quality and care not found in any other hot tub, including those with salt systems. The Mast3rPur Water Management System dramatically reduces harsh chemical consumption, like chlorine, while removing many heavy metals and chloramines for water that looks crystal clear, smells fresh and has a silky feel. This innovative, exclusive benefit is due to the power of three elements:



When absorbed in water, **ozone** kills pathogens and microorganisms, destroys organics and oxidizes non-organic contaminants.



When germicidal **UV-C light** is exposed to water it inactivates microorganisms and breaks down chloramines.



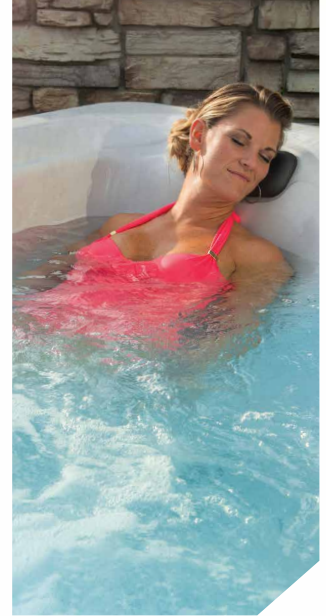
The unique combination of **copper and zinc** in the patent-pending EcoPur Charge filters creates an electro-chemical reaction to eliminate many microorganisms and remove heavy metals such as lead and mercury.

Each of the three elements are proven effective water management tools but when they are combined, they are dramatically more effective because of Advanced Oxidation Process (AOP). AOP is superior to other systems because it produces powerful hydroxyl radicals, which maximize disinfection and reduce chloramines fast and effectively. Clean, clear, fresh smelling and silkier water is available now with less work... another innovative, exclusive benefit only available through Master Spas.

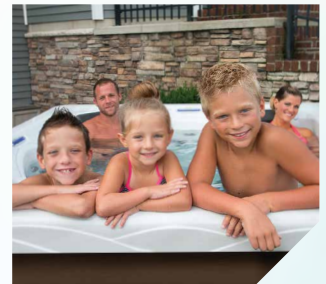
QuietFlo Water Care System™*

Mast3rPur works in unison with the QuietFlo Water Care System. The 24-hour circulation pump continues to filter and clean the water even when the hot tub is not in use. With QuietFlo, a typical 7-foot hot tub can have complete filtration every 13 minutes.

The synergy of the three elements combined with continuous circulation creates a simplicity and efficiency in water sanitation that is unmatched. The result is cleaner water with less chemicals, ensuring that your hot tub is ready when you are.



MAST3RPUR™ WATER MANAGEMENT SYSTEM A synergistic blend of three proven natural water sanitizers combine to make a dramatically more effective water management system. The blend results in clean, clear, fresh smelling and silkier water.*

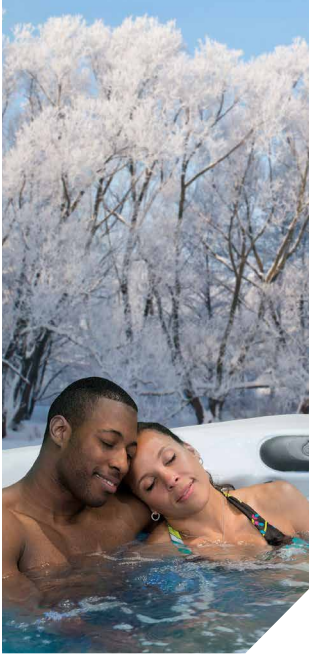


ECOPUR® CHARGE This patent-pending filtration system takes the work out of maintaining your hot tub. It relies on a unique blend of copper and zinc that creates an electrochemical reaction to eliminate many microorganisms and remove heavy metals.

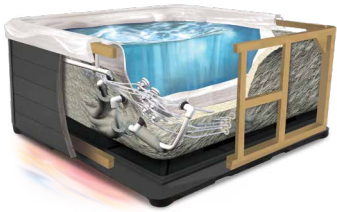


UV-C LIGHT When germicidal UV-C light is exposed to water it inactivates microorganisms and breaks down chloramines.

*Optional. The Mast3rPur option is only available on hot tubs equipped with the QuietFlo Water Care System.



RELAX Your Twilight is a superior energy-efficient hot tub and that means savings for you and your monthly utility bill.



A THERMAL BARRIER

Environmentally-friendly foam insulation provides a consistent, comfortable temperature inside the hot tub, while cold air is kept outside.



EXCEPTIONAL COVERS Safety, protection, and energy efficiency are key components of our exclusive UL certified covers. Constructed from recycled polyester, our covers are strong enough to withstand the elements but light enough for easy use.





Easy to own, easy to enjoy

Energy Efficient

All of our hot tubs are built to be used year-round in any climate. In fact, our environmentally-friendly foam insulation makes Twilight Series hot tubs by Master Spas among the most energy-efficient hot tubs in the industry.

By expanding to tightly seal and secure all areas under your hot tub, our insulation:

- Prevents heat loss
- Retains its shape and efficiency for the life of the product
- Resists mold and mildew
- Reduces the noise of your spa
- Produces no ozone harming off-gas, environmentally safe

Every hot tub is built to not only meet but to exceed stringent energy-efficiency regulations. All resulting in what really matters — a superior spa experience and savings for you and your monthly utility bill.





TWILIGHT SERIES 8.2

Dimensions	94" x 94" x 38" (239 cm x 239 cm x 97 cm)
Weight: Dry/Full	1,065 lbs (483 kg) / 5,345 lbs (2,424 kg)
Water Capacity	380 Gallons (1,438 L)
Power Requirements	240 V / 50 Amp
Seating Capacity	6
Stainless Steel Jets	44 Jets (2 Master Blasters®)
Pumps	2
Water Features	3
Filtration	EcoPur® Charge
LED Lighting	Orion Light System™
Exclusive Features	StressRelief Neck and Shoulder Seat™ Master Force™ Bio-Magnetic Therapy System
Premium Options	Fusion Air Sound System Bluetooth Speaker Dream Lighting Mast3rPur™ Water Management System QuietFlo Water Care System™ Vac-Formed ABS Pan Bottom
Listing Number	5700

TWILIGHT SERIES 8.25

Dimensions	94" x 94" x 38" (239 cm x 239 cm x 97 cm)
Weight: Dry/Full	1,100 lbs (499 kg) / 5,690 lbs (2,581 kg)
Water Capacity	395 Gallons (1,495 L)
Power Requirements	240 V / 50 Amp
Seating Capacity	7
Stainless Steel Jets	47 Jets (2 Master Blasters®)
Pumps	2
Water Features	2
Filtration	EcoPur® Charge
LED Lighting	Orion Light System™
Exclusive Features	StressRelief Neck and Shoulder Seat™ Master Force™ Bio-Magnetic Therapy System
Premium Options	Fusion Air Sound System Bluetooth Speaker Dream Lighting Mast3rPur™ Water Management System QuietFlo Water Care System™ Vac-Formed ABS Pan Bottom
Listing Number	7700



TWILIGHT SERIES 7.2

Dimensions	84" x 84" x 38" (214 cm x 214 cm x 97 cm)
Weight: Dry/Full	897 lbs (407 kg) / 4,555 lbs (2,066 kg)
Water Capacity	305 Gallons (1,155 L)
Power Requirements	240 V / 50 Amp
Seating Capacity	6
Stainless Steel Jets	36 Jets (2 Master Blasters®)
Pumps	2
Water Features	2
Filtration	EcoPur® Charge
LED Lighting	Orion Light System™
Exclusive Features	StressRelief Neck and Shoulder Seat™ Master Force™ Bio-Magnetic Therapy System
Premium Options	Fusion Air Sound System Bluetooth Speaker Dream Lighting Mast3rPur™ Water Management System QuietFlo Water Care System™ Vac-Formed ABS Pan Bottom
Listing Number	5500



TWILIGHT SERIES 7.25

Dimensions	84" x 84" x 38" (214 cm x 214 cm x 97 cm)
Weight: Dry/Full	935 lbs (424 kg) / 4,775 lbs (2,166 kg)
Water Capacity	305 Gallons (1,155 L)
Power Requirements	240 V / 50 Amp
Seating Capacity	7
Stainless Steel Jets	36 Jets (2 Master Blasters®)
Pumps	2
Water Features	1
Filtration	EcoPur® Charge
LED Lighting	Orion Light System™
Exclusive Features	StressRelief Neck and Shoulder Seat™ Master Force™ Bio-Magnetic Therapy System
Premium Options	Fusion Air Sound System Bluetooth Speaker Dream Lighting Mast3rPur™ Water Management System QuietFlo Water Care System™ Vac-Formed ABS Pan Bottom
Listing Number	6400





TWILIGHT SERIES 67.25

Dimensions	70" x 84" x 34" (178 cm x 214 cm x 87 cm)
Weight: Dry/Full	760 lbs (345 kg) / 3,730 lbs (1,692 kg)
Water Capacity	245 Gallons (927 L)
Power Requirements	240 V / 50 Amp
Seating Capacity	5
Stainless Steel Jets	28 Jets (1 Master Blaster®)
Pumps	2
Water Features	1
Filtration	EcoPur® Charge
LED Lighting	Orion Light System™
Exclusive Features	StressRelief Neck and Shoulder Seat™ Master Force™ Bio-Magnetic Therapy System
Premium Options	Fusion Air Sound System Bluetooth Speaker Dream Lighting Mast3rPur™ Water Management System QuietFlo Water Care System™
Listing Number	8000

TWILIGHT SERIES 6.2

Dimensions	78" x 78" x 34" (199 cm x 199 cm x 87 cm)
Weight: Dry/Full	840 lbs (381 kg) / 3,850 lbs (1,746 kg)
Water Capacity	250 Gallons (946 L)
Power Requirements	240 V / 50 Amp
Seating Capacity	5
Stainless Steel Jets	30 Jets (1 Master Blaster®)
Pumps	2
Water Features	2
Filtration	EcoPur® Charge
LED Lighting	Orion Light System™
Exclusive Features	StressRelief Neck and Shoulder Seat™ Master Force™ Bio-Magnetic Therapy System
Premium Options	Fusion Air Sound System Bluetooth Speaker Dream Lighting Mast3rPur™ Water Management System QuietFlo Water Care System™
Listing Number	5300



TWILIGHT SERIES 240

Dimensions	78" x 78" x 34" (199 cm x 199 cm x 87 cm)
Weight: Dry/Full	715 lbs (324 kg) / 2,980 lbs (1,352 kg)
Water Capacity	205 Gallons (776 L)
Power Requirements	240 V / 50 Amp
Seating Capacity	3
Stainless Steel Jets	26 Jets (1 Master Blaster®)
Pumps	2
Water Features	1
Filtration	EcoPur® Charge
LED Lighting	Orion Light System™
Exclusive Features	StressRelief Neck and Shoulder Seat™ Master Force™ Bio-Magnetic Therapy System
Premium Options	Fusion Air Sound System Bluetooth Speaker Dream Lighting Mast3rPur™ Water Management System QuietFlo Water Care System™
Listing Number	6200

Premium options

FUSION SOUND SYSTEM Four interior, water-resistant speakers and a subwoofer maximize the sound quality of your music. The Fusion Sound System connects quickly and easily through the Bluetooth of your phone or other device allowing you to stream your favorite station or playlist. With this system, you can even connect to your iPad®, while using a waterproof case and mount and stream your favorite movie or show...turning your hot tub into a “cinematic” experience.

BLUETOOTH SPEAKER Whether you are hanging out with loved ones or want to create a moment of calm, the right playlist can help you set the mood. This sound system has 40W power and a bass boost with up to 10 hours of playtime. It’s designed to easily rest on the water features of the spa for superior sound quality.

DREAM LIGHTING Beautiful soft streams of light accent the exterior corners of your hot tub at night.

MAST3RPUR™ WATER MANAGEMENT SYSTEM A synergistic blend of three proven natural water sanitizers combine to be dramatically effective through a chemical reaction known as Advanced Oxidation Process. This results in clean, clear, fresh smelling and silkier water. The Mast3rPur option is only available on hot tubs equipped with the QuietFlo Water Care System.

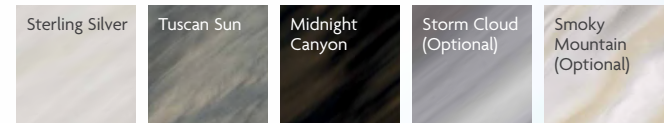
QUIETFLO WATER CARE SYSTEM™ Our advanced energy-efficient circulation pump moves water through your EcoPur® Charge filtration system at 30 gallons per minute, 24/7.

VAC-FORMED ABS PAN BOTTOM The frame enhanced with a vac-formed, high density ABS base helps keep the heat in and unwanted pests out.

Color options

Complement the color of your spa with the skirting of your choice for a distinctive combination that’s truly your own. DuraMaster Premium™ skirting is made of high-impact, weatherable polymer. This skirting has virtually no fading and is so durable, that it comes with a lifetime warranty. For ultimate luxury, choose the convincing DreamStone™ synthetic skirting, with the look of contemporary stacked stone and chestnut-stained barrel wood corners.

SHELL COLORS

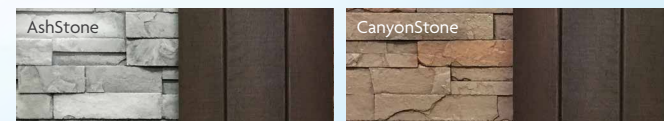


SKIRTING COLORS

DURAMASTER PREMIUM™ (Standard)



DREAMSTONE™ (optional for 7 ft. and 8 ft. hot tubs only)



YOU CAN NEVER HAVE TOO MUCH GOOD.

MasterSpas.com

Twilight
SERIES®



MASTER SPAS CARES

Master Spas is dedicated to helping people live life better. Our faith and beliefs guide us in partnering with local and national organizations for the greater good.

St. Jude Children's Research Hospital Leading the way the world understands, treats and defeats childhood cancer and other life-threatening diseases.



Michael Phelps Foundation Works to promote healthy, active lives, especially for children, primarily by expanding the opportunities for participation in the sport of swimming. Programs provide a learn-to-swim, healthy living, and goal-setting curriculum worldwide through the Boys and Girls Club of America and Special Olympics International.



Lupus Foundation of America Works to improve the quality of life for people living with lupus through research, advocacy, and support. Lupus is a complex disease affecting more than 1.5 million Americans that requires a comprehensive strategy.



Michael J. Fox Foundation Dedicated to finding a cure for Parkinson's disease and to ensuring the development of improved therapies.



Tunnel to Towers Foundation Helps families of fallen service members and first responders by providing mortgage-free housing. Tunnel to Towers builds custom-designed smart homes for catastrophically injured veterans and first responders. The foundation is also committed to eradicating veteran homelessness.



Vera Bradley Foundation A driving force in the fight against breast cancer, the foundation helps fund research to find a cure and improve the therapies for the most difficult-to-treat types of breast cancer, helping women affected by the disease.



RELAX. IT'S
Master Spas®

TWILIGHT SERIES HOT TUBS ARE MANUFACTURED BY MASTER SPAS, AN AWARD-WINNING COMPANY YOU CAN TRUST.



Master Spas® reserves the right to change product specifications or features without notice. Master Spas is a manufacturer of spas and related products and we stand behind every product we produce pursuant to those representations which are stated in our written limited warranty. Your dealer is an independent businessperson or company and not an employee or agent of Master Spas, LLC. We cannot and do not accept any responsibility or liability for any other representations, statements or contracts made by any dealer beyond the provisions of our written limited warranty. Master Spas, Twilight Series, Master Blaster and EcoPur are registered trademarks of Master Spas, LLC. Patents: masterspas.com/patents

POP24TS ©2024 Master Spas, LLC 6927 Lincoln Parkway, Fort Wayne Indiana 46804 260 436 9100 sales@masterspas.com MasterSpas.com @MasterSpas

